



October 2014

Successful Business Together – Serving McDonald's since 1986

OnTarget, Xero & DataSmart Support  
Great Service from Knowledgeable and Skilled Staff

Your call for assistance will be responded to by a real person in New Zealand who can help you.



Your Choice!

The team at Maxtel is delighted to be able to once again offer New Zealand Franchisees a choice in Back Office systems. Most sites have recently had to convert to eBos so that they could migrate to NewPos6, but this constraint is about to be lifted!

We expect to be able to offer **FULL OnTarget** to sites on NewPos6 sometime next month. We have worked hard over the last few weeks and are ready to start testing the NP6 connector – as soon as Australia delivers it ☺

Alternatively, or as a first step in the right direction, we are able to offer **OnTarget Labour Management** right now, and we already have several sites who have adopted this model. You will be on top of your Labour once again, with accurate timely tracking information available.

This new hybrid moves Scheduling and Timecards back to OnTarget, allowing full Labour Management within OnTarget. Cash, Stock and Register functions remain with eBos.

You can even continue to use your eSmartClock if you wish, or we offer the **Maxtel Clock** which can be installed on any computer for you **FOR FREE!** (see separate article)

OnTarget Labour Management gives you:



- Daily and Period Tracking with accurate Labour information
- Staff Scheduling you know and understand
- Timecards in OnTarget every day
- Hourly Sales automatically available in OnTarget after each hour
- The all new Maxtel Clock (for Windows PC)
- Unpaid Days month end accrual (before the Week is Closed)

Your Back Office system options are now:

	Full OnTarget	OT Labour Mgmt	Ebos
Cash	✓	eBos	eBos
Stock	✓	eBos	eBos
Scheduling	✓	✓	eBos
Projections	✓	✓ +eBos for Stock	eBos
TimeCards	✓	✓	eBos
Payroll	✓	✓	✓
Texting	✓	✓	✓
Accounting	✓	✓	✓

Get In Quick!

To register your interest and priority in the conversion queue please give us a call. You probably still have questions for us, so pick up the phone and Max and the team can explain any details to you.



We must thank again those Franchisees who have stuck with Maxtel all the way, and we also thank all those who have helped us develop variations on the services we are now able to offer. We are truly grateful for your support and determination.



So How Much Will This Cost?

Firstly, the conversion back to Full OnTarget or OnTarget Labour Management is managed by Maxtel at NO COST to you.

To return to OnTarget, the additional monthly costs are:

	Full OnTarget	OT Labour Mgmt
Cash & Stock	\$100	eBos
NP6 connect *	\$25	eBos
Scheduling	\$50	\$50



Additionally, you will require a Citrix Login for each site re-established if you do not still have one. Each Citrix login costs \$113.00 per month.

We are confident these additional monthly charges to you can be easily justified with the improved Labour Management and other time savings to be made with OnTarget. A number of franchisees are telling us they are losing well in excess of \$300/month just due to lack of accurate, timely labour information and are keen to move back ASAP.

We also provide payroll bureau, book keeping & monthly accounting services to some franchisees. If you're curious in just how that can save you real money please call Max to discuss your requirements and get a free quote.

NP6 connect \* *Australia will be charging Maxtel or MRL NZ the equivalent of AUD\$1,250/month for the NP6 Connector. If they let us pay that amount directly we will charge you \$25/month to use it and assume the risk associated with covering the cost.*

But Wait...  
**THERE'S MORE!**

We apologise for the late release of this month's newsletter, but it is just great to be able to offer these options to you now.

As a bonus, you get ..... Page 2!!!



October 2014

**Maxtel Clock**

Here's a wee preview of what the new Maxtel Clock looks like. The software and installation is free to Full OnTarget and OnTarget Labour Management clients and can be installed on any Windows PC – wall-mounted, tablet, or desktop.

Loads of features including:

paid and unpaid break management,

and sales and labour tracking for the day.

Sweet! This really is "Made For You" ☺

**10:53 AM**  
10/10/2014 Friday

Code:

In Out

**Paid (15 min) Break:**  
Start Finish

**Welcome to the PC Timeclock!**

Tap here and enter your **employee code**

Tap on the keypad when done

Tap IN for: Start of shift or End of unpaid meal (30 min) break

Tap OUT for: End of shift or Start of unpaid meal (30 min) break

Tap START for: Start of paid drink (15 min) break

Tap FINISH for: End of paid drink (15 min) break

Code	First Name	Last Name	Status
312	Aaron	DAWSON	On 15 Min Break. Ends: 10:46
301	Dan	NOSON	Clocked Out
213	David	ALLUM	Clocked In
437	Fiona	MAXWELL	On 15 Min Break. Ends: 10:59
97	George	CASTEL	On 15 Min Break. Ends: 10:46
418	Harry	TALLMAN	Clocked In
705	Luke	ORANGE	Clocked In
290	Mark	AARDVARK	Clocked Out
352	Matthew	SMITH	On 15 Min Break. Ends: 11:00
42	Melissa	GARVEY	Clocked In
416	Nora	PISCES	Clocked In
193	Sam	TALIK	Clocked In

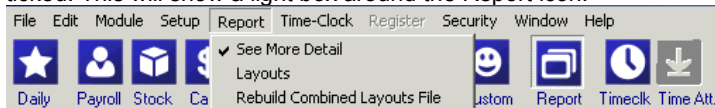
Hours without a break	First Name	Last Name	Drink (15 min)	Meal (30 min)
4:49	Nora	PISCES	1	1
4:49	Samantha	KALLA	1	1
3:52	Melissa	GARVEY	1	1
3:51	Harry	TALLMAN	1	1
3:51	Sam	TALIK	1	1
0:06	Luke	ORANGE	1	1
	Aaron	DAWSON		1
	Fiona	MAXWELL	1	1
	George	CASTEL		1
	Matthew	SMITH		1

	Actual	Projected	Diff
Sales \$	780.00	710.00	70.00
Transactions	90	100	-10
Last Actual Time	8:00		

Hours (Proj - Act)	4:41	
Bonus Hours (from Sales Diff)	3:06	
Gained / Lost Hours	7:47	

**Period Timecard Report for HR / Union**

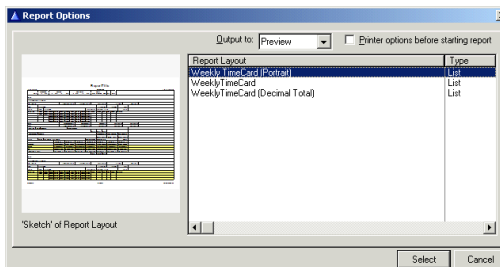
To produce a Period Timecard report without the comments out the side, make sure you have the **Report / See More Detail** option ticked. This will show a light box around the Report icon:



Then select your Period Timecard report options and OK.

You will see a Report Options window.

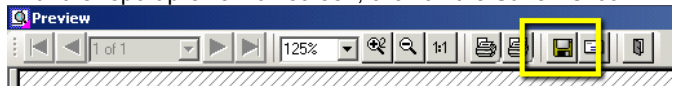
Highlight the Weekly Timecard (Portrait) layout and click on Select:



This will still print the comments but at the bottom of the report so they can be chopped off.

**Emailing a report out of OnTarget Online**

Next you may want to email this report to HR. The best way to achieve this is to Save the report as a PDF document: With the report preview on screen, click on the **Save As** icon:

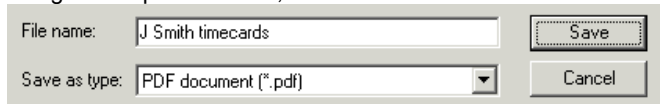


**Period Time Card**

Change **Save in** from Preview to your local C:\ drive, using the dropdown arrow:



You can then choose another folder on your C:\ drive if you want, e.g. Download. Enter a file name to save it as and **Save as type PDF**, using the dropdown arrow, then click on Save:



The report will be saved on your local C:\ drive as a pdf and you can now attach it to an email like any other document or attachment.

**Negative CPMR Differences**

Some sites who have cancelled or deferred the conversion to eBos have found that they have started getting negative CPMR Differences every day. This has been caused by the eBos CFM Update being applied on the date originally scheduled for conversion to eBos, and not being reversed out. So if you see this, give us a call and we will arrange to have the CFM change undone. You will then need to recreate the BO files for the days affected for it to come right.